

SLIDE RAIL COUPLING SRC-6

Designed for use with
our 6-inch flanged
solids-handling pumps



LOCATION

This SRC-6 is designed for wet wells, tanks, or lift stations where it is necessary to remove a pump from service and reinstall the pump without maintenance personnel entering the pit to unbolt the pump flanges.

STATIONARY ELBOW

Cast iron ASTM A-48 class 30

MOVABLE FITTING

Ductile iron ASTM A-536

GUIDERAIL CAP

Bracket: 304 stainless steel

Plugs: ductile iron ASTM A-536-84

HARDWARE

304 series stainless steel

O-RINGS

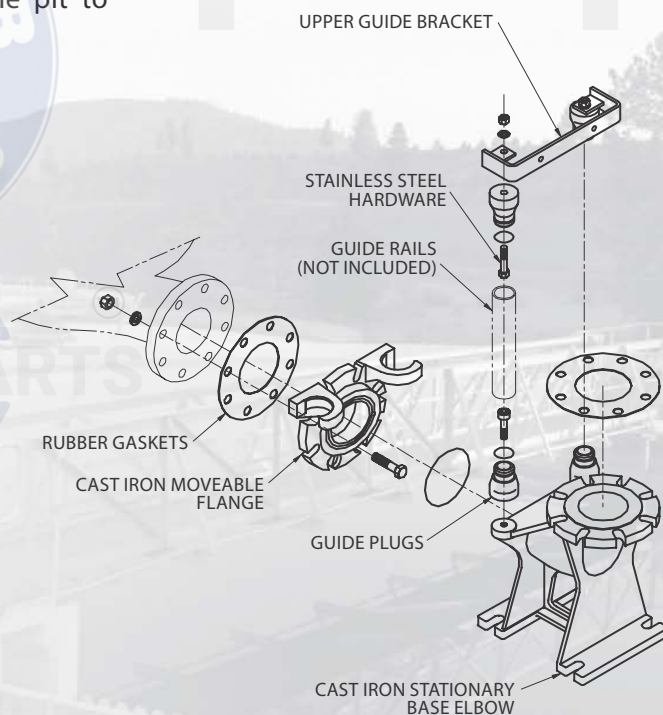
Buna-N, 70 ±5 Duro.

GASKETS

Rubber

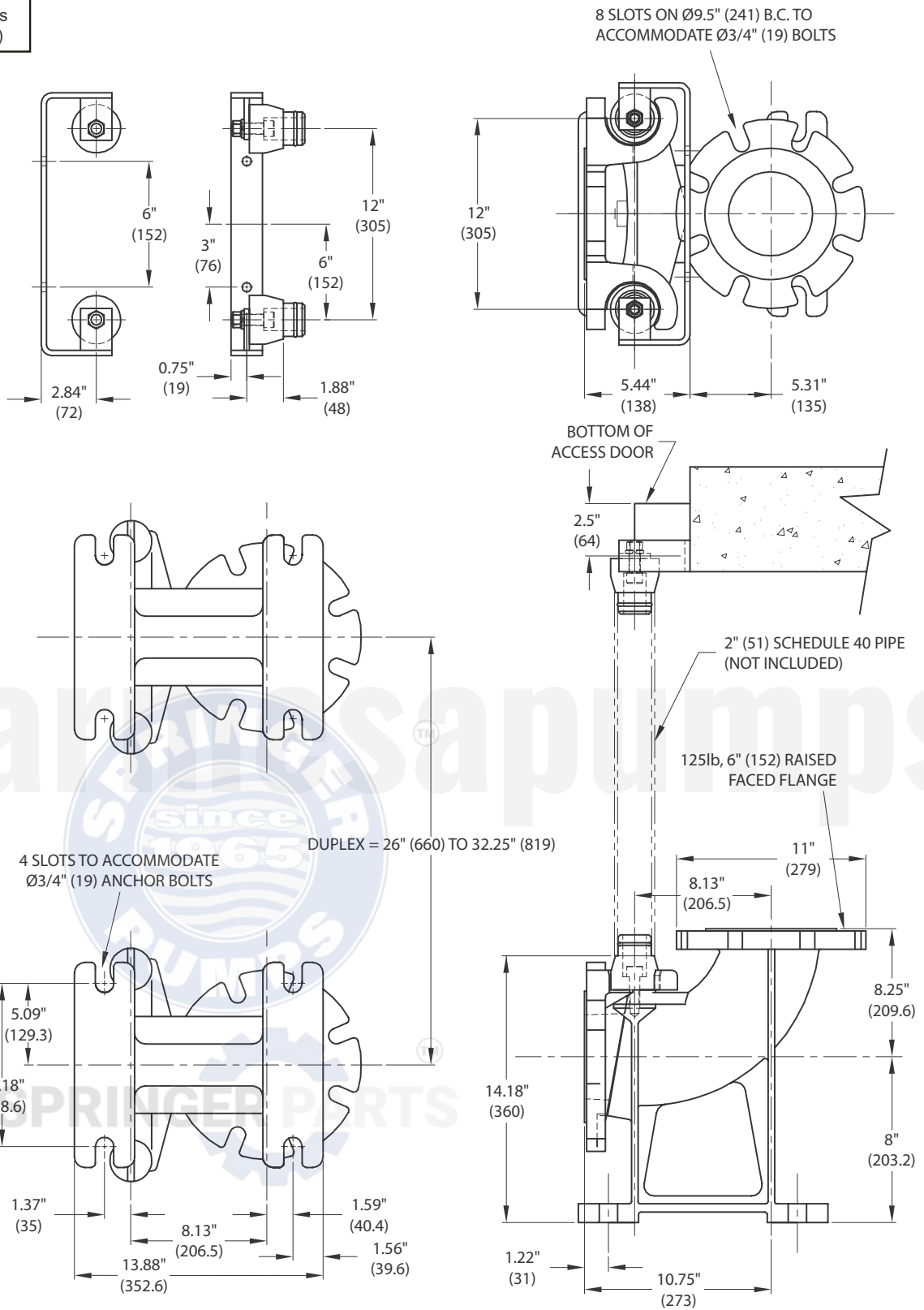
PAINT

Air dry enamel, water based.



Last update: FEB/22/2024

inches
(mm)



MODEL	PART No.	SIZE	RAILS	COUPLING	WEIGHT (pounds)
SRC6	62170802	6"	2"	w/ upper guide bracket	180
SRC6-FA	62170816	6"	-	flygt adapter	42