

SERVICE & OPERATING MANUAL

Original Instructions



1: PUMP SPECS

2: INSTAL & OP

3: EXP VIEW

4: AIR END

5: WET END

6: OPTIONAL

7: WARRANTY

Certified Quality



ISO 9001 Certified
ISO 14001 Certified



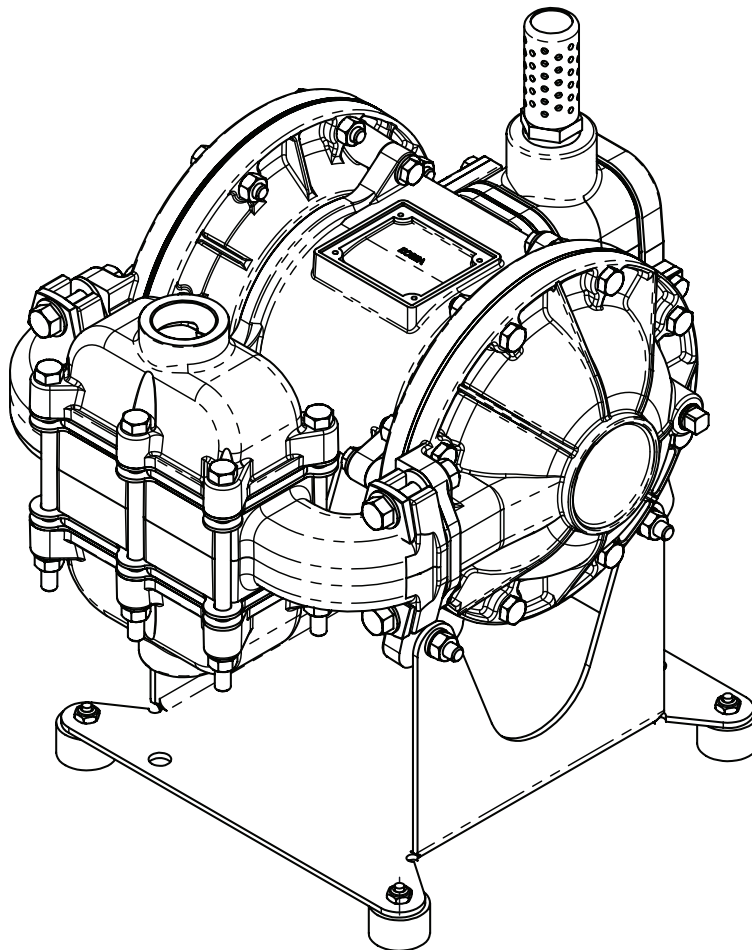
Warren Rupp, Inc.
A Unit of IDEX Corporation
800 N. Main St.,
Mansfield, Ohio 44902 USA
Telephone (419) 524.8388
Fax (419) 522.7867
SANDPIPERPUMP.COM



© Copyright 2022 Warren Rupp, Inc.
All rights reserved

Model SB1 & SB25

Metallic Design Level 5



SANDPIPER®
A WARREN RUPP, INC. BRAND
SANDPIPERPUMP.COM

Safety Information

IMPORTANT



Read the safety warnings and instructions in this manual before pump installation and start-up. Failure to comply with the recommendations stated in this manual could damage the pump and void factory warranty.



When the pump is used for materials that tend to settle out or solidify, the pump should be flushed after each use to prevent damage. In freezing temperatures the pump should be completely drained between uses.

CAUTION



Before pump operation, inspect all fasteners for loosening caused by gasket creep. Retighten loose fasteners to prevent leakage. Follow recommended torques stated in this manual.



Nonmetallic pumps and plastic components are not UV stabilized. Ultraviolet radiation can damage these parts and negatively affect material properties. Do not expose to UV light for extended periods of time.



WARNING

The use of non-OEM replacement parts will void (or negate) agency certifications, including CE, ATEX, CSA, 3A and EC1935 compliance (Food Contact Materials). Warren Rupp, Inc. cannot ensure nor warrant non-OEM parts to meet the stringent requirements of the certifying agencies.

WARNING



When used for toxic or aggressive fluids, the pump should always be flushed clean prior to disassembly.



Before maintenance or repair, shut off the compressed air line, bleed the pressure, and disconnect the air line from the pump. Be certain that approved eye protection and protective clothing are worn at all times. Failure to follow these recommendations may result in serious injury or death.



Airborne particles and loud noise hazards. Wear eye and ear protection.



In the event of diaphragm rupture, pumped material may enter the air end of the pump, and be discharged into the atmosphere. If pumping a product that is hazardous or toxic, the air exhaust must be piped to an appropriate area for safe containment.



Take action to prevent static sparking. Fire or explosion can result, especially when handling flammable liquids. The pump, piping, valves, containers and other miscellaneous equipment must be properly grounded.



This pump is pressurized internally with air pressure during operation. Make certain that all fasteners and piping connections are in good condition and are reinstalled properly during reassembly.



Use safe practices when lifting

RECYCLING

Many components of SANDPIPER® AODD pumps are made of recyclable materials. We encourage pump users to recycle worn out parts and pumps whenever possible, after any hazardous pumped fluids are thoroughly flushed.

ATEX Pumps - Conditions For Safe Use

- Ambient temperature range is as specified in tables 1 to 3 on the next page (per Annex I of DEKRA 18ATEX0094X)
- ATEX compliant pumps are suitable for use in explosive atmospheres when the equipment is properly grounded in accordance with local electrical codes
- Non-Metallic ATEX Pumps only — See Explanation of Pump Nomenclature / ATEX Details Page**
Conductive Polypropylene, conductive Acetal or conductive PVDF pumps are not to be installed in applications where the pumps may be subjected to oil, greases and hydraulic liquids.
- The optionally provided solenoids shall be protected by a fuse corresponding to its rated current (max 3*I_{rat} according to EN 60127) or by a motor protecting switch with short circuit and thermal instantaneous tripping (set to the rated current) as short circuit protection. For solenoids with a very low rated current, a fuse with the lowest current value according to the indicated standard will be sufficient. The fuse may be accommodated in the associated supply unit or shall be separately arranged. The rated voltage of the fuse shall be equal or greater than the stated rated voltage of the solenoid. The breaking capacity of the fuse shall be as high as or higher than the maximum expected short circuit current at the location of the installation (usually 1500 A). The maximum permissible ripple is 20% for all dc solenoids.
***Not applicable for all pump models — See Explanation of Pump Nomenclature / ATEX Details Page**
- When operating pumps equipped with non-conductive diaphragms that exceed the maximum permissible projected area, as defined in EN ISO 80079-36 : 2016 section 6.7.5 table 8, the following protection methods must be applied
 - Equipment is always used to transfer electrically conductive fluids or
 - Explosive environment is prevented from entering the internal portions of the pump, i.e. dry running.
- Pumps provided with the pulse output kit and used in the potentially explosive atmosphere caused by the presence of the combustible dust shall be installed in such a way that the pulse output kit is protected against impact
***Not applicable for all pump models — See Explanation of Pump Nomenclature / ATEX Details Page**

Temperature Tables

Table 1. Category 1 & Category 2 ATEX Rated Pumps

Ambient Temperature Range [°C]	Process Temperature Range [°C] ¹	Temperature Class	Maximum Surface Temperature [°C]
-20°C to +60°C	-20°C to +80°C	T5	T100°C
	-20°C to +108°C	T4	T135°C
	-20°C to +160°C	T3	T200°C
	-20°C to +177°C	(225°C) T2	

¹Per CSA standards ANSI LC6-2018 US & Canadian Technical Letter R14, G-Series Natural Gas Models are restricted to (-20°C to + 80°C) process temperature

Table 2. Category 2 ATEX Rated Pumps Equipped with Pulse Output Kit or Integral Solenoid:

Ambient Temperature Range [°C]	Process Temperature Range [°C]	Temperature Class	Maximum Surface Temperature [°C]	Options	
				Pulse Output Kit	Integral Solenoid
-20°C to +60°C	-20°C to +100°C	T5	T100	X	
-20°C to +50°C	-20°C to +100°C	T5	T100		X

²ATEX Pulse output or Integral Solenoid Not Available For All Pump Models See Explanation of Pump Nomenclature / ATEX Details Page

Table 3. Category M1 ATEX Rated Pumps for Mining

Ambient Temperature Range [°C]	Process Temperature Range [°C]
-20°C to +60°C	-20°C to +150°C

Note: The ambient temperature range and the process temperature range should not exceed the operating temperature range of the applied non-metallic parts as listed in the manuals of the pumps.

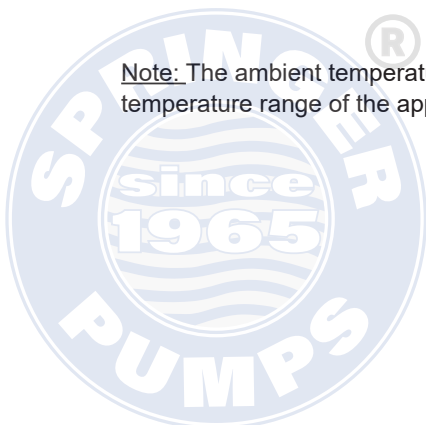


Table of Contents

1: PUMP SPECS

SECTION 1: PUMP SPECIFICATIONS.....1

- Explanation of Nomenclature
- Performance
- Materials
- Dimensional Drawings

2: INSTAL & OP

SECTION 2: INSTALLATION & OPERATION ...5

- Principle of Pump Operation
- Recommended Installation Guide
- Troubleshooting Guide

3: EXP VIEW

SECTION 3: EXPLODED VIEW.....8

- Composite Repair Parts Drawing
- Composite Repair Parts List
- Material Codes

4: AIR END

SECTION 4: AIR END11

- Air Valve Assembly for Aluminum Center Sections
- Air Valve Assembly for Cast Iron Center Sections
- Pilot Valve Assembly

5: WET END

SECTION 5: WET END.....15

- Diaphragm Drawings
- Diaphragm Servicing

6: OPTIONAL

SECTION 6: OPTIONAL CONFIGURATIONS .17

- Dual Port

7: WARRANTY

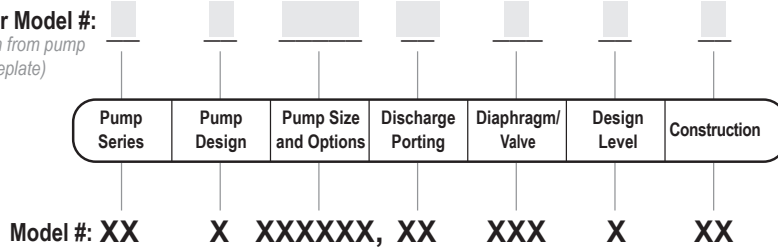
SECTION 7: WARRANTY & CERTIFICATES ..19

- Warranty
- EC Declaration of Conformity - Machinery
- EC Declaration of Conformity - ATEX



Explanation of Pump Nomenclature

Your Model #:
(fill in from pump
nameplate)



Pump Series

S SANDPIPER®

Pump Design

B Solid Ball

Pump Size

1 1"

25 1" BSPT (Tapered Thread)

Discharge Porting Position

D Bottom

S Side

T Top

ET Dual Top

ES Dual Side

Options

P1 Intrinsically Safe ATEX Compliant Pulse Output

Diaphragm Check Valve Materials

B Nitrile

C FKM with PTFE

F FDA Accepted White Nitrile

GN Neoprene Backup with PTFE Overlay and PTFE Check Balls

GR Hytrel Backup w/ PTFE Overlay/PTFE Balls

GZ PTFE/Nitrile Bonded One-Piece/PTFE Balls

H EPDM with PTFE

N Neoprene

R Hytrel

S Santoprene

V FKM

Design Level

5

Construction

A Aluminum Wetted, Aluminum Air

SI Stainless Steel Wetted, Cast Iron Air

SS Stainless Steel Wetted, Aluminum Air

HC Alloy-C Wetted, Aluminum Air

HI Alloy-C Wetted, Cast Iron Air

Your Serial #: (fill in from pump nameplate) _____

ATEX Detail

	ATEX Details	Construction	Options
	II 1 G Ex h IIC T5...225°C (T2) Ga	SI, HI	00
	II 1D Ex h IIIC T100°C...T200°C Da		
	I M1 Ex h I Ma	A, SI, SS, HC, HI	00
	II 2 G Ex h IIC T5...225°C (T2) Gb		
	II 2 D Ex h IIIC T100°C...T200°C Db	A, HC, HI, SI, SS	P1
	II 2 G Ex h ia IIC T5 Gb		
	II 2 D Ex h ia IIIC T100°C Db		



SANDPIPER®
A WARREN RUPP INC. BRAND

SANDPIPERPUMP.COM

sb1dl5sm-rev1222

Model SB1 & SB25 • 5

Tel: 866-777-6060
Fax: 866-777-6383
Int'l: +001 267 404 2910

Springer Pumps, LLC
Springer Parts®

Websites: www.springerpumps.com
www.springerparts.com

Performance

SB1 & SB25

1: PUMP SPECS

SUCTION/DISCHARGE PORT SIZE

- SB1: 1" (25.4mm) NPT(F)
- SB25: 1" (25.4mm) BSP Tapered

CAPACITY

- 0 to 42 gallons per minute
(0 to 159 liters per minute)

AIR DISTRIBUTION VALVE

- No-lube, no-stall design

SOLIDS-HANDLING

- Up to nearly .25 in. (6.3mm)

HEADS UP TO

- 125 psi or 289 ft. of water
(8.8 Kg/cm² or 88 meters)

MAXIMUM OPERATING PRESSURE

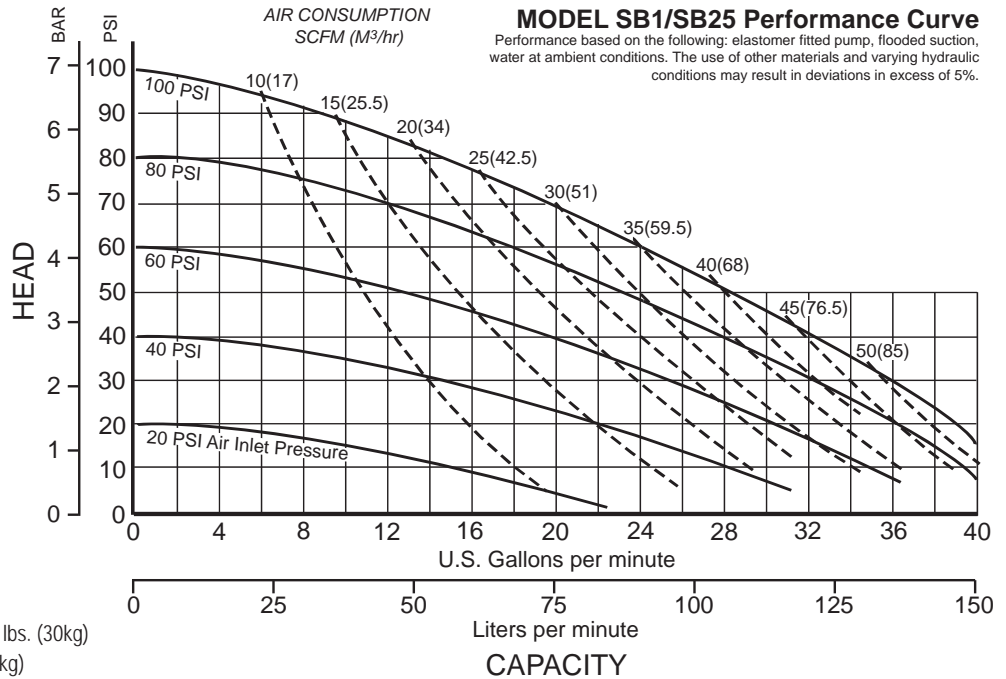
- 125 psi (8.6 bar)

DISPLACEMENT/STROKE

- .09 Gallon / .34 liter

SHIPPING WEIGHT

- Aluminum 31 lbs. (14kg)
- Stainless Steel 45 lbs. (20kg)
- Alloy C 45 lbs. (20kg)
- Stainless Steel with Cast Iron Center 65 lbs. (30kg)
- Alloy C with Cast Iron Center 65 lbs. (30kg)



Materials

Material Profile:	Operating Temperatures:	
	Max.	Min.
CAUTION! Operating temperature limitations are as follows:		
Conductive Acetal: Tough, impact resistant, ductile. Good abrasion resistance and low friction surface. Generally inert, with good chemical resistance except for strong acids and oxidizing agents.	190°F 88°C	-20°F -29°C
EPDM: Shows very good water and chemical resistance. Has poor resistance to oils and solvents, but is fair in ketones and alcohols.	280°F 138°C	-40°F -40°C
FKM: (Fluorocarbon) Shows good resistance to a wide range of oils and solvents; especially all aliphatic, aromatic and halogenated hydrocarbons, acids, animal and vegetable oils. Hot water or hot aqueous solutions (over 70°F(21°C)) will attack FKM.	350°F 177°C	-40°F -40°C
Hytrel®: Good on acids, bases, amines and glycols at room temperatures only.	220°F 104°C	-20°F -29°C
Neoprene: All purpose. Resistance to vegetable oils. Generally not affected by moderate chemicals, fats, greases and many oils and solvents. Generally attacked by strong oxidizing acids, ketones, esters and nitro hydrocarbons and chlorinated aromatic hydrocarbons.	200°F 93°C	-10°F -23°C
Nitrile: General purpose, oil-resistant. Shows good solvent, oil, water and hydraulic fluid resistance. Should not be used with highly polar solvents like acetone and MEK, ozone, chlorinated hydrocarbons and nitro hydrocarbons.	190°F 88°C	-10°F -23°C
Nylon: 6/6 High strength and toughness over a wide temperature range. Moderate to good resistance to fuels, oils and chemicals.	180°F 82°C	32°F 0°C

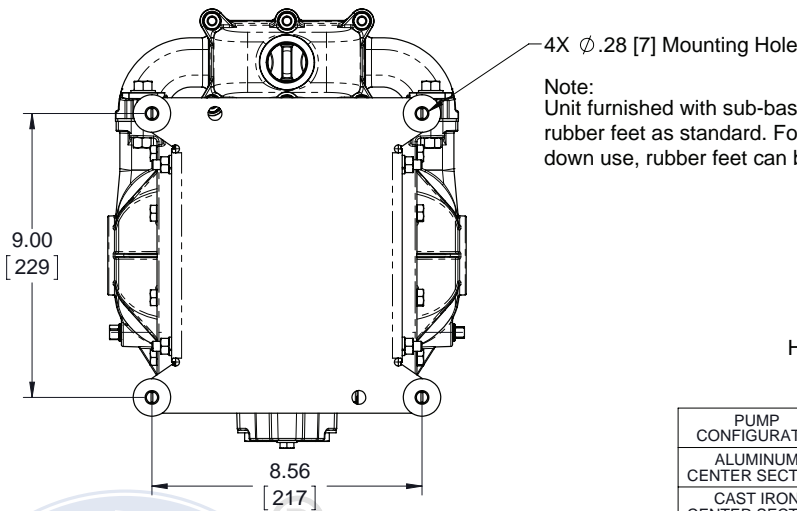
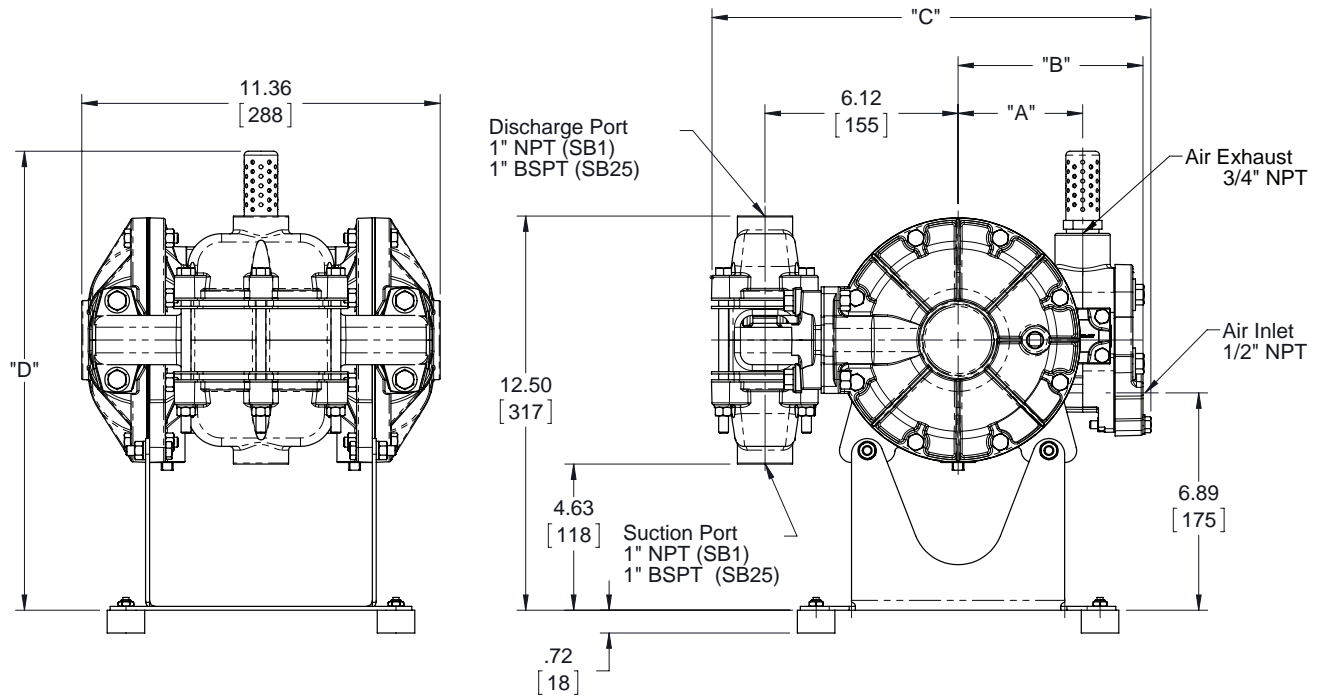
Polypropylene: A thermoplastic polymer. Moderate tensile and flex strength. Resists strong acids and alkali. Attacked by chlorine, fuming nitric acid and other strong oxidizing agents.	180°F 82°C	32°F 0°C
PVDF: (Polyvinylidene Fluoride) A durable fluoroplastic with excellent chemical resistance. Excellent for UV applications. High tensile strength and impact resistance.	250°F 121°C	0°F -18°C
Santoprene®: Injection molded thermoplastic elastomer with no fabric layer. Long mechanical flex life. Excellent abrasion resistance.	275°F 135°C	-40°F -40°C
UHMW PE: A thermoplastic that is highly resistant to a broad range of chemicals. Exhibits outstanding abrasion and impact resistance, along with environmental stress-cracking resistance.	180°F 82°C	-35°F -37°C
Urethane: Shows good resistance to abrasives. Has poor resistance to most solvents and oils.	150°F 66°C	32°F 0°C
Virgin PTFE: (PFA/TFE) Chemically inert, virtually impervious. Very few chemicals are known to chemically react with PTFE; molten alkali metals, turbulent liquid or gaseous fluorine and a few fluoro-chemicals such as chlorine trifluoride or oxygen difluoride which readily liberate free fluorine at elevated temperatures.	220°F 104°C	-35°F -37°C
<i>Maximum and Minimum Temperatures are the limits for which these materials can be operated. Temperatures coupled with pressure affect the longevity of diaphragm pump components. Maximum life should not be expected at the extreme limits of the temperature ranges.</i>		
Metals:		
Alloy C: Equal to ASTM494 CW-12M-1 specification for nickel and nickel alloy.		
Stainless Steel: Equal to or exceeding ASTM specification A743 CF-8M for corrosion resistant iron chromium, iron chromium nickel and nickel based alloy castings for general applications. Commonly referred to as 316 Stainless Steel in the pump industry.		

For specific applications, always consult the Chemical Resistance Chart.

Dimensional Drawings

SB1 & SB25 Heavy Duty Ball Valve

1: PUMP SPECS

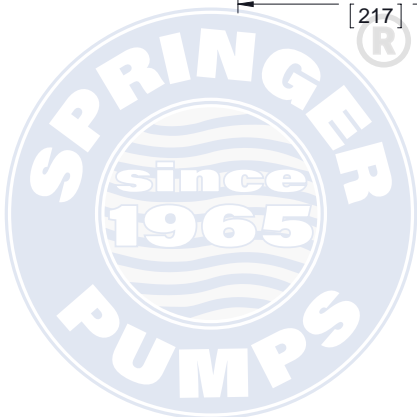


SB1 / SB25

HEAVY DUTY BALL VALVE PUMP

DIMENSIONAL TOLERANCE $\pm 1/8$ [3]
[XX] = MILLIMETERS

PUMP CONFIGURATION	DIM "A"	DIM "B"	DIM "C"	DIM "D"
ALUMINUM CENTER SECTION	3.95 [100]	5.86 [149]	13.90 [353]	14.55 [370]
CAST IRON CENTER SECTION	4.10 [104]	5.54 [141]	13.60 [345]	15.75 [400]
PULSE OUTPUT CONFIGURATION				



SANDPIPER®
A WARREN RUPP INC. BRAND

SANDPIPERPUMP.COM

sb1dl5sm-rev1222

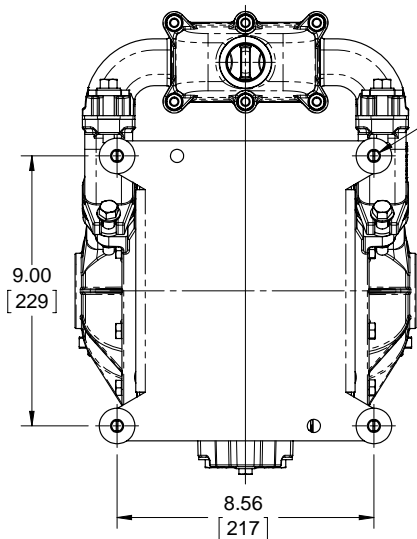
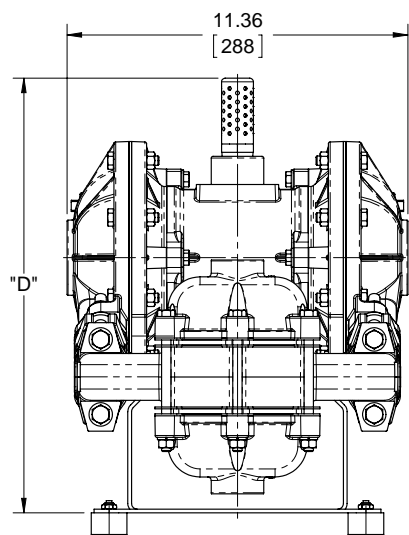
Model SB1 & SB25 • 7

Tel: 866-777-6060
Fax: 866-777-6383
Int'l: +001 267 404 2910

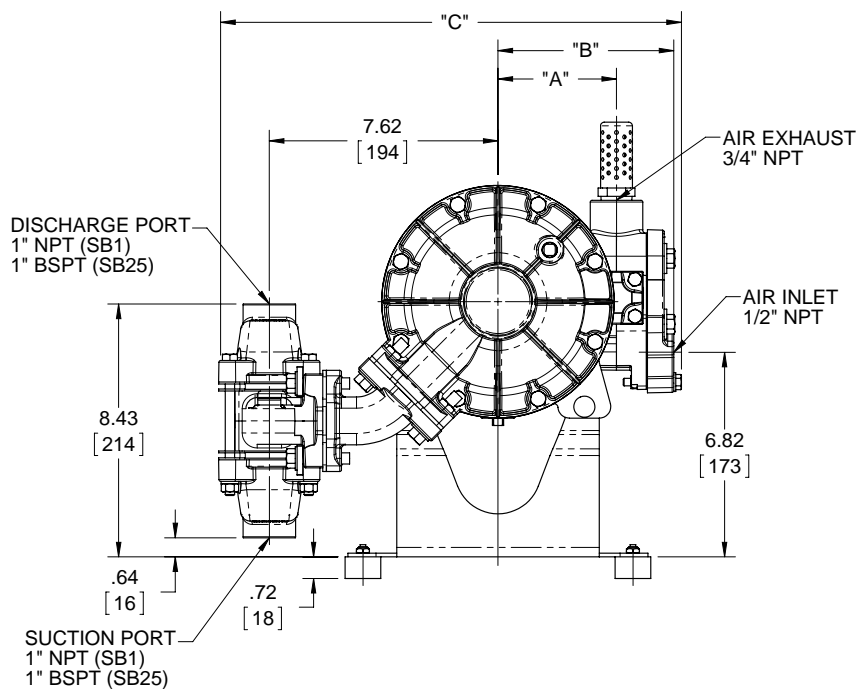
Springer Pumps, LLC
Springer Parts®

Websites: www.springerpumps.com
www.springerparts.com

1: PUMP SPECS



NOTE:
UNIT FURNISHED WITH SUB-BASE PLATE
AND RUBBER FEET AS STANDARD. FOR
STATIONARY BOLT DOWN USE, RUBBER
FEET CAN BE REMOVED.



SB1 / SB25

HEAVY DUTY BALL VALVE PUMP
BOTTOM PORTED

DIMENSIONAL TOLERANCE $\pm 1/8$ [3]

[XX] = MILLIMETERS

PUMP CONFIGURATION	DIM "A"	DIM "B"	DIM "C"	DIM "D"
ALUMINUM CENTER SECTION	3.95 [100]	5.86 [149]	15.36 [390]	14.49 [368]
CAST IRON CENTER SECTION	4.10 [104]	5.54 [141]	15.06 [383]	15.69 [398]
PULSE OUTPUT CONFIGURATION				



8 • Model SB1 & SB25

SANDPIPERPUMP.COM

sb1dl5sm-rev1222

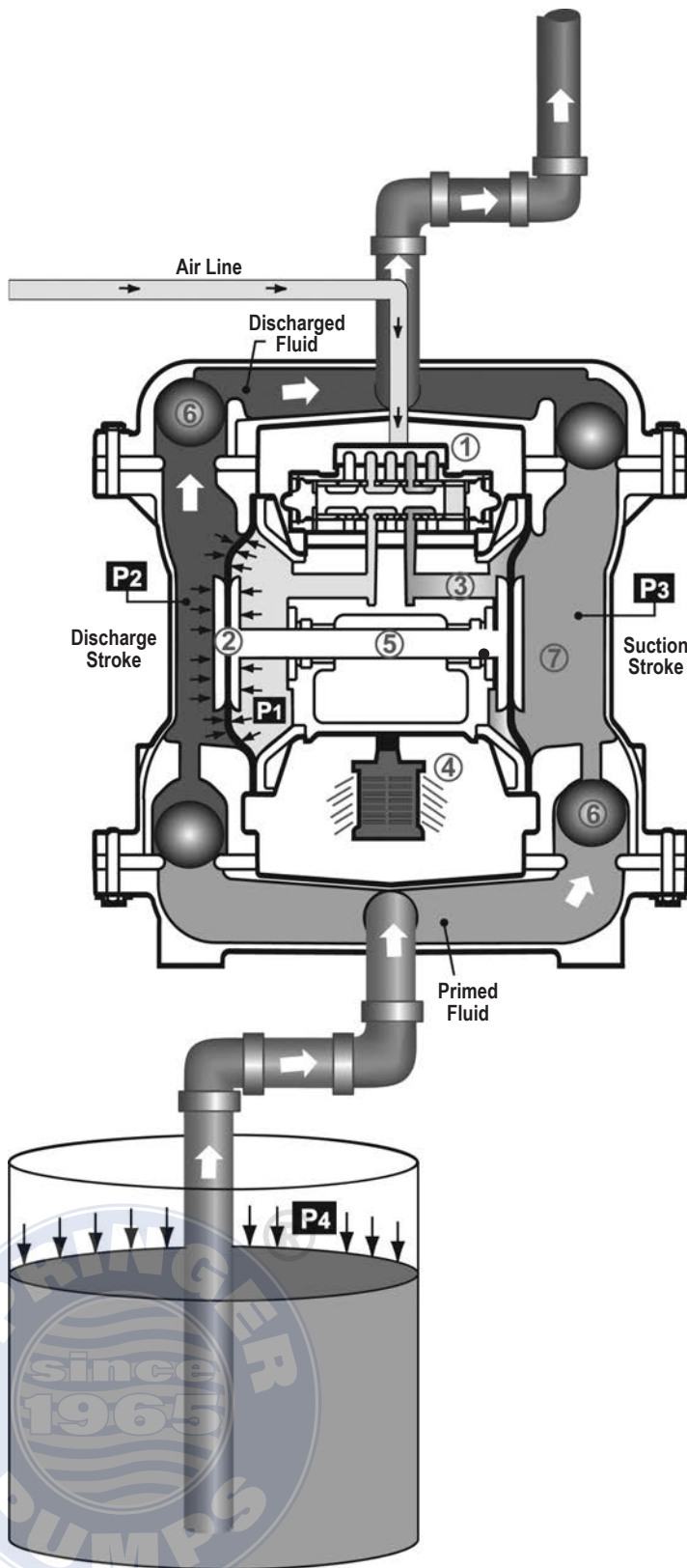
SANDPIPER®
A WARREN RUPP, INC. BRAND

Tel: 866-777-6060
Fax: 866-777-6383
Int'l: +001 267 404 2910

Springer Pumps, LLC
Springer Parts®

Websites: www.springerpumps.com
www.springerparts.com

Principle of Pump Operation



Air-Operated Double Diaphragm (AODD) pumps are powered by compressed air or nitrogen.

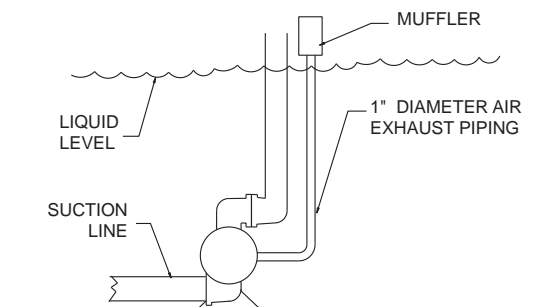
The main directional (air) control valve ① distributes compressed air to an air chamber, exerting uniform pressure over the inner surface of the diaphragm ②. At the same time, the exhausting air ③ from behind the opposite diaphragm is directed through the air valve assembly(s) to an exhaust port ④.

As inner chamber pressure (**P1**) exceeds liquid chamber pressure (**P2**), the rod ⑤ connected diaphragms shift together creating discharge on one side and suction on the opposite side. The discharged and primed liquid's directions are controlled by the check valves (ball or flap) ⑥ orientation.

The pump primes as a result of the suction stroke. The suction stroke lowers the chamber pressure (**P3**) increasing the chamber volume. This results in a pressure differential necessary for atmospheric pressure (**P4**) to push the fluid through the suction piping and across the suction side check valve and into the outer fluid chamber ⑦.

Suction (side) stroking also initiates the reciprocating (shifting, stroking or cycling) action of the pump. The suction diaphragm's movement is mechanically pulled through its stroke. The diaphragm's inner plate makes contact with an actuator plunger aligned to shift the pilot signaling valve. Once actuated, the pilot valve sends a pressure signal to the opposite end of the main directional air valve, redirecting the compressed air to the opposite inner chamber.

SUBMERGED ILLUSTRATION



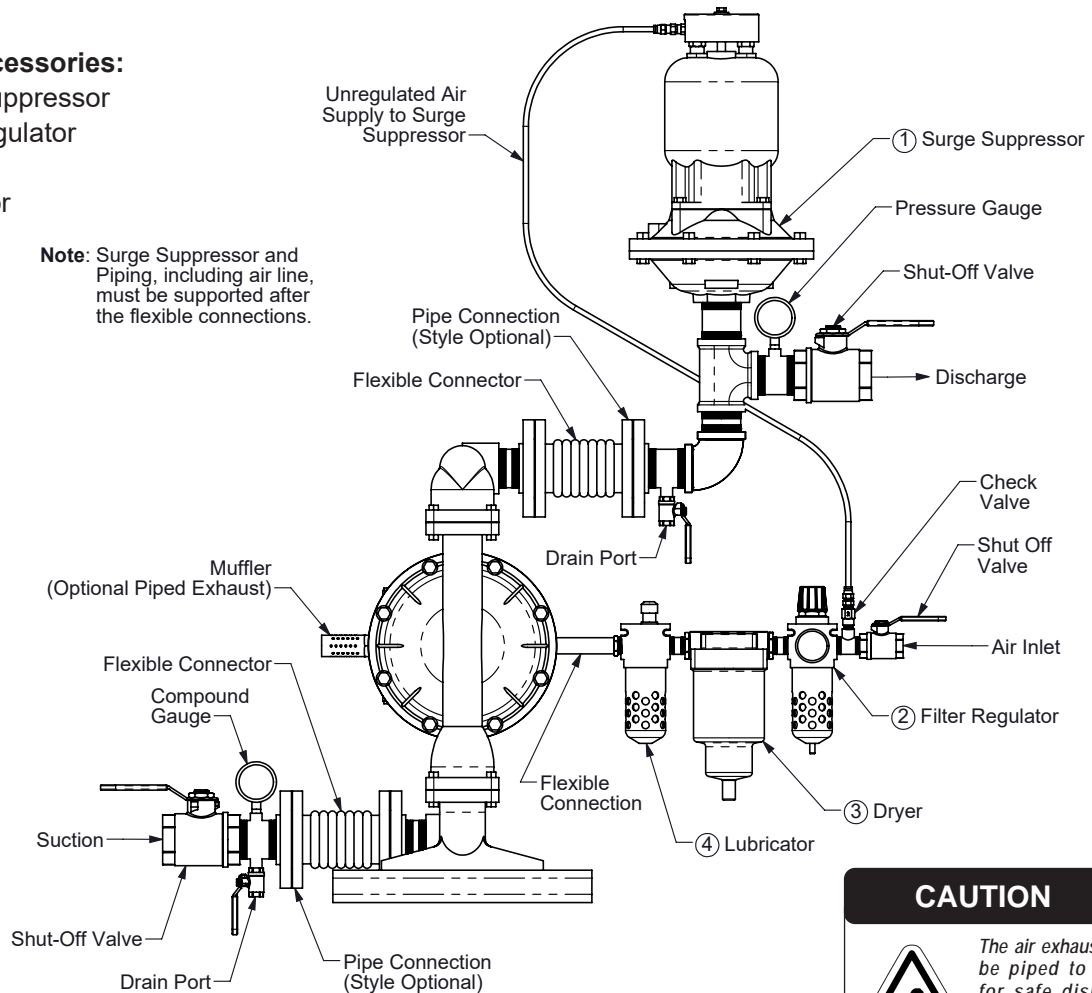
Pump can be submerged if the pump materials of construction are compatible with the liquid being pumped. The air exhaust must be piped above the liquid level. When the pumped product source is at a higher level than the pump (flooded suction condition), pipe the exhaust higher than the product source to prevent siphoning spills.

Recommended Installation Guide

Available Accessories:

1. Surge Suppressor
2. Filter/Regulator
3. Air Dryer
4. Lubricator

Note: Surge Suppressor and Piping, including air line, must be supported after the flexible connections.



CAUTION



The air exhaust should be piped to an area for safe disposition of the product being pumped, in the event of a diaphragm failure.

Installation And Start-Up

Locate the pump as close to the product being pumped as possible. Keep the suction line length and number of fittings to a minimum. Do not reduce the suction line diameter.

Air Supply

Connect the pump air inlet to an air supply with sufficient capacity and pressure to achieve desired performance. A pressure regulating valve should be installed to insure air supply pressure does not exceed recommended limits.

Air Valve Lubrication

The air distribution system is designed to operate WITHOUT lubrication. This is the standard mode of operation. If lubrication is desired, install an air line lubricator set to deliver one drop of SAE 10 non-detergent oil for every 20 SCFM (9.4 liters/sec.) of air the pump consumes. Consult the Performance Curve to determine air consumption.

Air Line Moisture

Water in the compressed air supply may cause icing or freezing of the exhaust air, causing the pump to cycle erratically or stop operating. Water in the air supply can be reduced by using a point-of-use air dryer.

Air Inlet And Priming

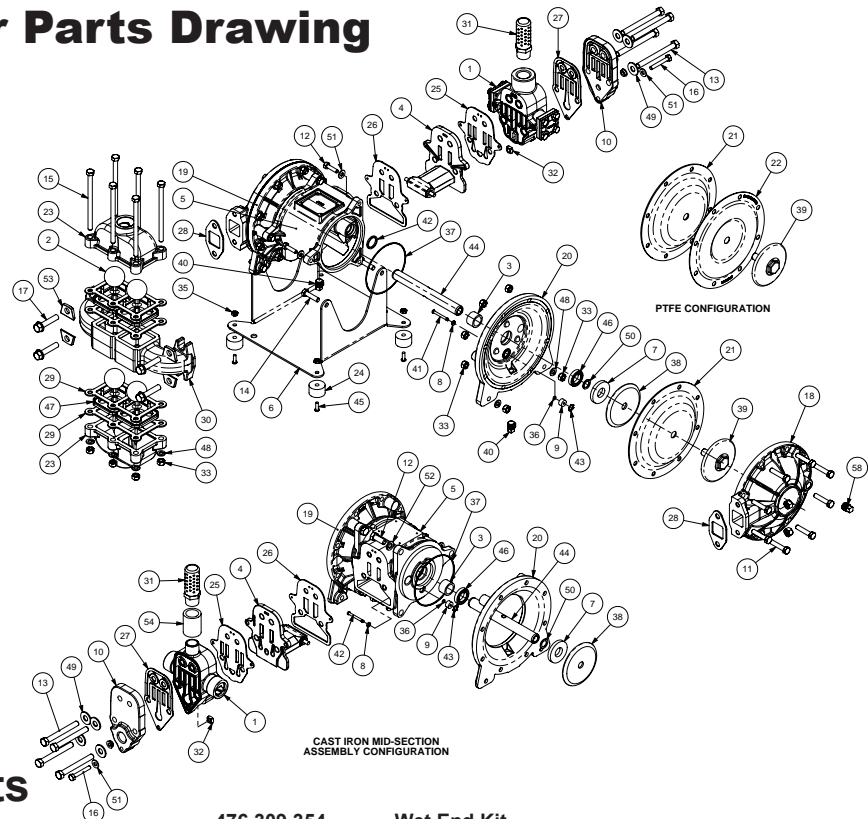
To start the pump, slightly open the air shut-off valve. After the pump primes, the air valve can be opened to increase air flow as desired. If opening the valve increases cycling rate, but does not increase the rate of flow, cavitation has occurred. The valve should be closed slightly to obtain the most efficient air flow to pump flow ratio.

Troubleshooting Guide

Symptom:	Potential Cause(s):	Recommendation(s):
Pump Cycles Once	Deadhead (system pressure meets or exceeds air supply pressure).	Increase the inlet air pressure to the pump. Pump is designed for 1:1 pressure ratio at zero flow. (Does not apply to high pressure 2:1 units).
	Air valve or intermediate gaskets installed incorrectly.	Install gaskets with holes properly aligned.
	Bent or missing actuator plunger.	Remove pilot valve and inspect actuator plungers.
Pump Will Not Operate / Cycle	Pump is over lubricated.	Set lubricator on lowest possible setting or remove. Units are designed for lube free operation.
	Lack of air (line size, PSI, CFM).	Check the air line size and length, compressor capacity (HP vs. cfm required).
	Check air distribution system.	Disassemble and inspect main air distribution valve, pilot valve and pilot valve actuators.
	Discharge line is blocked or clogged manifolds.	Check for inadvertently closed discharge line valves. Clean discharge manifolds/piping.
	Deadhead (system pressure meets or exceeds air supply pressure).	Increase the inlet air pressure to the pump. Pump is designed for 1:1 pressure ratio at zero flow. (Does not apply to high pressure 2:1 units).
	Blocked air exhaust muffler.	Remove muffler screen, clean or de-ice, and re-install.
	Pumped fluid in air exhaust muffler.	Disassemble pump chambers. Inspect for diaphragm rupture or loose diaphragm plate assembly.
Pump Cycles and Will Not Prime or No Flow	Pump chamber is blocked.	Disassemble and inspect wetted chambers. Remove or flush any obstructions.
	Cavitation on suction side.	Check suction condition (move pump closer to product).
	Check valve obstructed. Valve ball(s) not seating properly or sticking.	Disassemble the wet end of the pump and manually dislodge obstruction in the check valve pocket. Clean out around valve ball cage and valve seat area. Replace valve ball or valve seat if damaged. Use heavier valve ball material.
	Valve ball(s) missing (pushed into chamber or manifold).	Worn valve ball or valve seat. Worn fingers in valve ball cage (replace part). Check Chemical Resistance Guide for compatibility.
	Valve ball(s) / seat(s) damaged or attacked by product.	Check Chemical Resistance Guide for compatibility.
	Check valve and/or seat is worn or needs adjusting.	Inspect check valves and seats for wear and proper setting. Replace if necessary.
	Suction line is blocked.	Remove or flush obstruction. Check and clear all suction screens or strainers.
	Excessive suction lift.	For lifts exceeding 20' of liquid, filling the chambers with liquid will prime the pump in most cases.
	Suction side air leakage or air in product.	Visually inspect all suction-side gaskets and pipe connections.
	Pumped fluid in air exhaust muffler.	Disassemble pump chambers. Inspect for diaphragm rupture or loose diaphragm plate assembly.
Pump Cycles Running Sluggish / Stalling, Flow Unsatisfactory	Over lubrication.	Set lubricator on lowest possible setting or remove. Units are designed for lube free operation.
	Icing.	Remove muffler screen, de-ice, and re-install. Install a point of use air drier.
	Clogged manifolds.	Clean manifolds to allow proper air flow.
	Deadhead (system pressure meets or exceeds air supply pressure).	Increase the inlet air pressure to the pump. Pump is designed for 1:1 pressure ratio at zero flow. (Does not apply to high pressure 2:1 units).
	Cavitation on suction side.	Check suction (move pump closer to product).
	Lack of air (line size, PSI, CFM).	Check the air line size, length, compressor capacity.
	Excessive suction lift.	For lifts exceeding 20' of liquid, filling the chambers with liquid will prime the pump in most cases.
	Air supply pressure or volume exceeds system hd.	Decrease inlet air (press. and vol.) to the pump. Pump is cavitating the fluid by fast cycling.
	Undersized suction line.	Meet or exceed pump connections.
	Restrictive or undersized air line.	Install a larger air line and connection.
	Suction side air leakage or air in product.	Visually inspect all suction-side gaskets and pipe connections.
	Suction line is blocked.	Remove or flush obstruction. Check and clear all suction screens or strainers.
	Pumped fluid in air exhaust muffler.	Disassemble pump chambers. Inspect for diaphragm rupture or loose diaphragm plate assembly.
	Check valve obstructed.	Disassemble the wet end of the pump and manually dislodge obstruction in the check valve pocket.
	Check valve and/or seat is worn or needs adjusting.	Inspect check valves and seats for wear and proper setting. Replace if necessary.
Product Leaking Through Exhaust	Entrained air or vapor lock in chamber(s).	Purge chambers through tapped chamber vent plugs. Purging the chambers of air can be dangerous.
	Diaphragm failure, or diaphragm plates loose.	Replace diaphragms, check for damage and ensure diaphragm plates are tight.
Premature Diaphragm Failure	Diaphragm stretched around center hole or bolt holes.	Check for excessive inlet pressure or air pressure. Consult Chemical Resistance Chart for compatibility with products, cleaners, temperature limitations and lubrication.
	Cavitation.	Enlarge pipe diameter on suction side of pump.
	Excessive flooded suction pressure.	Move pump closer to product. Raise pump/place pump on top of tank to reduce inlet pressure. Install Back pressure device (Tech bulletin 41r). Add accumulation tank or pulsation dampener.
	Misapplication (chemical/physical incompatibility).	Consult Chemical Resistance Chart for compatibility with products, cleaners, temperature limitations and lubrication.
Unbalanced Cycling	Incorrect diaphragm plates or plates on backwards, installed incorrectly or worn.	Check Operating Manual to check for correct part and installation. Ensure outer plates have not been worn to a sharp edge.
	Excessive suction lift.	For lifts exceeding 20' of liquid, filling the chambers with liquid will prime the pump in most cases.
	Undersized suction line.	Meet or exceed pump connections.
	Pumped fluid in air exhaust muffler.	Disassemble pump chambers. Inspect for diaphragm rupture or loose diaphragm plate assembly.
	Suction side air leakage or air in product.	Visually inspect all suction-side gaskets and pipe connections.
	Check valve obstructed.	Disassemble the wet end of the pump and manually dislodge obstruction in the check valve pocket.
	Check valve and/or seat is worn or needs adjusting.	Inspect check valves and seats for wear and proper setting. Replace if necessary.
Premature Diaphragm Failure	Entrained air or vapor lock in chamber(s).	Purge chambers through tapped chamber vent plugs.

For additional troubleshooting tips contact After Sales Support at service.warrenrupp@idexcorp.com or 419-524-8388

Composite Repair Parts Drawing



3: EXP VIEW

Service & Repair Kits

475.283.000

Air End Conversion Kit

(Converts from a Conductive Polypropylene Air Valve Assembly to the Die Cast Aluminum Air Valve Assembly) Valve Body Assembly, Gaskets, and Longer Capscrews

475.284.379

Wet End Conversion Kit

(Converts to Ribbed Check Valve Seats and Thicker Gaskets) Check Valve Seats, Conductive Nitrile Gaskets, and Longer Capscrews

475.284.384

Wet End Conversion Kit

(Converts to Ribbed Check Valve Seats and Thicker Gaskets) Check Valve Seats, Conductive Neoprene Gaskets, and Longer Capscrews

475.284.385

Wet End Conversion Kit

((Converts to Ribbed Check Valve Seats and Thicker Gaskets) Check Valve Seats, Conductive EPDM Gaskets, and Longer Capscrews

475.284.608

Wet End Conversion Kit

(Converts to Ribbed Check Valve Seats and Thicker Gaskets) Check Valve Seats, Conductive PTFE Gaskets, and Longer Capscrews

476.103.00

Air End Kit

(For cast iron centers)
Sleeve and Spool Set, Pilot Valve Body Assembly, Bumpers, Bushings, Gaskets, O-rings, Seals, Plungers, and Retaining Rings

476.311.000

Air End Kit

(For aluminum centers)
Sleeve and Spool Set, Pilot Valve Body Assembly, Bumpers, Bushings, Gaskets, O-rings, Seals, Plungers, and Retaining Rings

476.341.000

Air End Refurbishment Kit

(With new die cast aluminum air valve body)
Bumpers, Bushings, Gaskets, O-rings, Seals, Plungers, and Retaining Rings

476.313.000

Air End Refurbishment Kit

(For cast iron centers with conductive polypropylene air valve body)
Bumpers, Bushings, Gaskets, O-rings, Seals, Plungers, and Retaining Rings

476.309.354

Wet End Kit

Santoprene Diaphragms, Santoprene Check Balls, PTFE Manifold Gaskets, Conductive EPDM Gaskets, and Copper Sealing Washers

476.309.356

Wet End Kit

Hytrek Diaphragms, Hytrek Check Balls, Fiber Manifold Gaskets, Conductive Nitrile Flange Gaskets, and Copper Sealing Washers

476.309.360

Wet End Kit

Nitrile Diaphragms, Nitrile Check Balls, Fiber Manifold Gaskets, Conductive Nitrile Flange Gaskets, and Copper Sealing Washers

476.309.363

Wet End Kit

FKM Diaphragms, FKM Check Balls, PTFE Gaskets, and Copper Sealing Washers

476.309.365

Wet End Kit

Neoprene Diaphragms, Neoprene Check Balls, Fiber Manifold Gaskets, Conductive Neoprene Flange Gaskets, and Copper Sealing Washers

476.309.633

Wet End Kit

FKM Diaphragms, PTFE Check Balls, PTFE Gaskets, and Copper Sealing Washers

476.309.634

Wet End Kit

EPDM Diaphragms, PTFE Check Balls, PTFE Manifold Gaskets, Conductive EPDM Gaskets, and Copper Sealing Washers

476.309.635

Wet End Kit

Neoprene Backup Diaphragms, PTFE Overlay Diaphragms, PTFE Check Balls, PTFE Gaskets, and Copper Sealing Washers

476.309.638

Wet End Kit

Hytrek Backup Diaphragms, PTFE Overlay Diaphragms, PTFE Check Balls, PTFE Gaskets, and Copper Sealing Washers

476.309.651

Wet End Kit

One-Piece Bonded PTFE Diaphragms, PTFE Check Balls, PTFE Gaskets, and Copper Sealing Washers

Composite Repair Parts List

Item	Part Number	Description	Qty.	Item	Part Number	Description	Qty.
①*	031.203.000	ASSEMBLY, AIR VALVE-SEE PG 11	1		286.008.366	DIAPHRAGM	2
	031.030.557	ASSEMBLY, AIR VALVE-SEE PG 12 (CAST IRON CENTERS ONLY)	1	22	286.112.000	DIAPHRAGM, ONE-PIECE BONDED	2
2	050.008.365	BALL, CHECK	4	23	286.015.604	DIAPHRAGM, OVERLAY	2
	050.008.354	BALL, CHECK	4		334.013.110	FLANGE, THREADED PORTING (1" NPT)	2
	050.008.356	BALL, CHECK	4		334.013.110E	FLANGE, THREADED PORTING (1" BSP)	2
	050.008.360	BALL, CHECK	4		334.013.112	FLANGE, THREADED PORTING (1" NPT)	2
	050.008.363	BALL, CHECK	4		334.013.112E	FLANGE, THREADED PORTING (1" BSP)	2
	050.011.600	BALL, CHECK	4		334.013.157	FLANGE, THREADED PORTING (1" NPT)	2
3	070.012.170	BEARING, SLEEVE	2	24	334.013.157E	FLANGE, THREADED PORTING (1" BSP)	2
④	095.074.001	PILOT VALVE ASSEMBLY	1	25	350.002.360	FOOT, RUBBER	4
5	114.007.157	INTERMEDIATE	1	26	360.057.360	GASKET	1
	114.012.010	BRACKET, INTERMEDIATE (CAST IRON CENTERS ONLY)	1	27	360.056.379	GASKET	1
6	115.071.357	BRACKET, MOUNTING (SIDE PORTED UNITS)	1	28	360.058.360	GASKET	1
	115.127.330	MOUNTING BRACKET (DOWN PORTED UNITS)	1	29	360.030.425	GASKET, MANIFOLD	2
	115.070.330	BRACKET, MOUNTING (TOP PORTED UNITS)	1		360.030.600	GASKET, MANIFOLD	2
7	132.019.357	BUMPER	2		360.115.379	GASKET, FLANGE	4
8	132.022.360	BUMPER, ACTUATOR	2		360.115.384	GASKET, FLANGE	4
9	135.034.506	BUSHING, PLUNGER	2	30	360.115.385	GASKET, FLANGE-CONDUCTIVE EPDM	4
10	165.042.157	CAP, AIR INLET, ASS'Y	1		360.115.608	GASKET, FLANGE	4
	165.042.558	CAP, AIR INLET, ASS'Y (CAST IRON CENTERS ONLY)	1	31	518.006.156	MANIFOLD	1
11	170.029.330	CAPSCREW, HEX HD, 5/16-18 X 1.50	16	32	518.006.110	MANIFOLD	1
12	170.043.330	CAPSCREW, HEX HD, 1/4-20 X 1.00	6	33	518.006.112	MANIFOLD	1
	170.006.330	CAPSCREW, HEX HD, 3/8-16 UNC X 1.00 (CAST IRON CENTERS ONLY)	6	34	530.036.000	MUFFLER	1
13	170.083.330	CAPSCREW, HEX HD, 3/8-16 UNC X 3.75	4	35	542.001.330	NUT, SQUARE	1
	170.033.330	CAPSCREW, HEX HD, 3/8-16 UNC X 3.25 (CAST IRON CENTERS ONLY)	4	36	545.004.330	NUT, HEX, 5/16-18	26
14	170.045.330	CAPSCREW, HEX HD, 5/16-18 X 1 1/4	4	37	545.005.330	NUT, HEX, 3/8-16	4
15	170.122.330	CAPSCREW, HEX HD, 5/16-18 X 5.00	6	38	547.002.330	NUT, STOP	4
16	170.063.330	CAPSCREW, HEX HD, 1/4-20 X 1.75	1		560.001.360	O-RING	2
17	171.010.330	CAPSCREW, FLANGE LOCK, 3/8-16 UNC X 1.75	4		560.040.360	O-RING	2
18	196.012.157	CHAMBER	2	39	612.022.330	PLATE, DIAPHRAGM, INNER	2
	196.012.110	CHAMBER, OUTER	2		612.218.330	PLATE, DIAPHRAGM, INNER (USE WITH ONE-PIECE BONDED DIAPHRAGM)	2
	196.012.112	CHAMBER, OUTER	2	40	612.101.110	ASSEMBLY, OUTER DIAPHRAGM PLATE	2
19	196.042.157	CHAMBER, INNER	1	41	612.101.112	ASSEMBLY, OUTER DIAPHRAGM PLATE	2
	196.084.010	CHAMBER, INNER (CAST IRON CENTERS ONLY)	1	42	612.108.157	ASSEMBLY, OUTER DIAPHRAGM PLATE	2
20	196.043.157	CHAMBER, INNER	1	43	618.003.330	PLUG, PIPE, 1/4	3
	196.090.010	CHAMBER, INNER (CAST IRON CENTERS ONLY)	1	44	620.007.114	PLUNGER, ACTUATOR	2
21	286.008.354	DIAPHRAGM	2	45	675.040.360	RING, SEALING (AL CENTER)	2
	286.008.356	DIAPHRAGM	2	46	675.042.115	RING, RETAINING	2
	286.008.360	DIAPHRAGM	2	47	685.039.120	ROD, DIAPHRAGM	1
	286.008.363	DIAPHRAGM	2		706.013.330	SCREW, MACHINE	4
	286.008.364	DIAPHRAGM	2	48	720.010.360	SEAL, U-CUP	2
	286.008.365	DIAPHRAGM	2	49	722.026.580	SEAT, CHECK VALVE	2
				50	722.102.110	SEAT, CHECK VALVE	2
				51	722.102.112	SEAT, CHECK VALVE	2
					900.004.330	WASHER, LOCK - 5/16	10
					901.005.330	WASHER, FLAT, 3/8	4
					901.012.180	WASHER, SEALING	2
					901.035.330	WASHER, FLAT, 1/4	7
					901.035.330	WASHER, FLAT, 1/4 (CAST IRON CENTERS ONLY)	1
				52	900.005.330	WASHER, LOCK, 3/8	6
				53	905.001.115	WASHER, TAPER	4
				54	255.012.335	COUPLING, PIPE, 3/4 NPT (CAST IRON CENTERS ONLY)	1
				58	618.003.110	PLUG, PIPE (STAINLESS STEEL ONLY)	2
					618.003.112	PLUG, PIPE (ALLOY C ONLY)	2
					618.003.330	PLUG, PIPE (ALUMINUM ONLY)	2

LEGEND:

○ = Items contained within Air End Kits

□ = Items contained within Wet End Kits

* Air End Kit only includes sleeve and spool set, not entire air valve assembly

Note: Kits contain components specific to the material codes.

ATEX Compliant

SANDPIPER®
A WARREN RUPP INC. BRAND

SANDPIPERPUMP.COM

sb1dl5sm-rev1222

Springer Pumps, LLC
Springer Parts®

Websites: www.springerpumps.com
www.springerparts.com

Model SB1 & SB25 • 13

3: EXP VIEW

Material Codes - The Last 3 Digits of Part Number

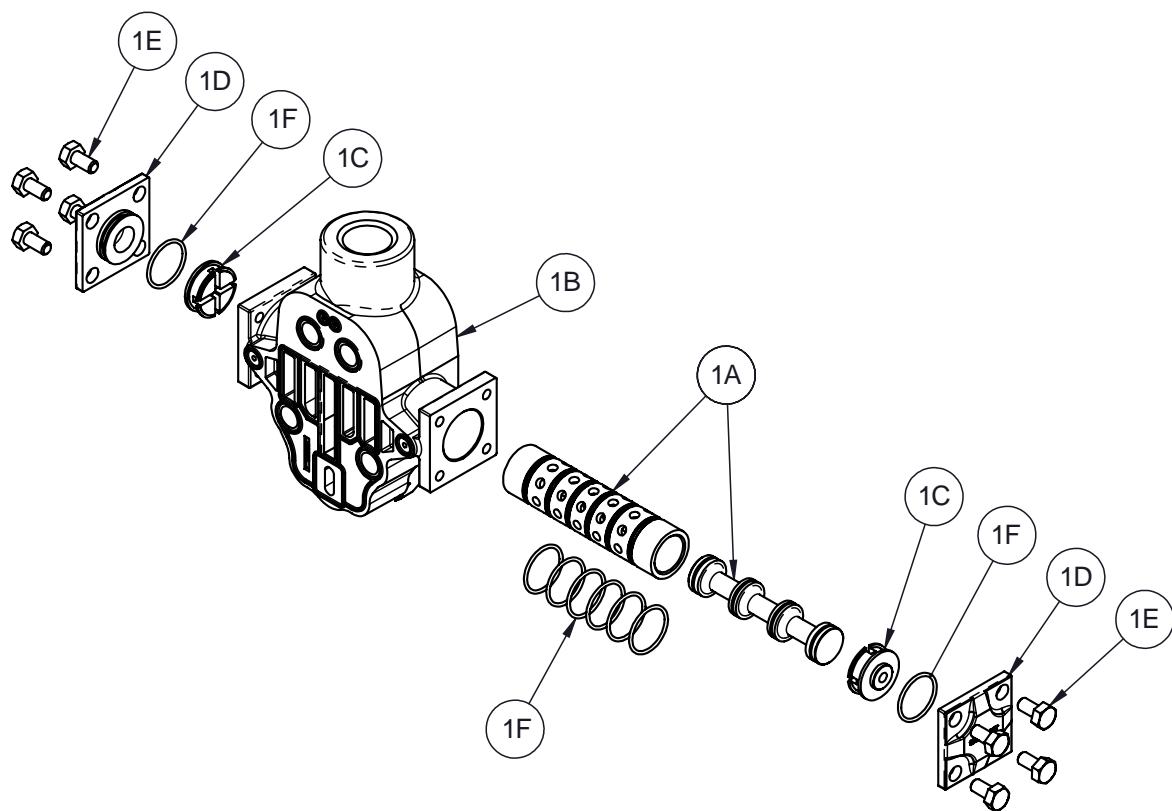
000.....Assembly, sub-assembly; and some purchased items	365.....Neoprene Rubber Color coded: GREEN	PTFE Overlay, Balls, and Seals
010.....Cast Iron	366.....Food Grade Nitrile	668.....PTFE, FDA Santoprene®/PTFE
015.....Ductile Iron	368.....Food Grade EPDM	• Delrin and Hytrel are registered tradenames of E.I. DuPont.
020.....Ferritic Malleable Iron	371.....Phlithane (Tuftane)	• Nylatron is a registered tradename of Polymer Corp.
080.....Carbon Steel, AISI B-1112	374.....Carboxylated Nitrile	• Gylon is a registered tradename of Garlock, Inc.
110.....Alloy Type 316 Stainless Steel	375.....Fluorinated Nitrile	• Santoprene is a registered tradename of Exxon Mobil Corp.
111.....Alloy Type 316 Stainless Steel (Electro Polished)	378.....High Density Polypropylene	• Rulon II is a registered tradename of Dixon Industries Corp.
112.....Alloy C	379.....Conductive Nitrile	• Rylton is a registered tradename of Phillips Chemical Co.
113.....Alloy Type 316 Stainless Steel (Hand Polished)	384.....Conductive Neoprene	• Valox is a registered tradename of General Electric Co.
114.....303 Stainless Steel	385.....Conductive EPDM	
115.....302/304 Stainless Steel	408.....Cork and Neoprene	
117.....440-C Stainless Steel (Martensitic)	425.....Compressed Fibre	
120.....416 Stainless Steel (Wrought Martensitic)	426.....Blue Gard	
148.....Hardcoat Anodized Aluminum	440.....Vegetable Fibre	
150.....6061-T6 Aluminum	500.....Delrin® 500	
152.....2024-T4 Aluminum (2023-T351)	502.....Conductive Acetal, ESD-800	
155.....356-T6 Aluminum	503.....Conductive Acetal, Glass-Filled	
156.....356-T6 Aluminum	506.....Delrin® 150	
157.....Die Cast Aluminum Alloy #380	520.....Injection Molded PVDF Natural color	
158.....Aluminum Alloy SR-319	540.....Nylon	
162.....Brass, Yellow, Screw Machine Stock	542.....Nylon	
165.....Cast Bronze, 85-5-5-5	544.....Nylon Injection Molded	
166.....Bronze, SAE 660	550.....Polyethylene	
170.....Bronze, Bearing Type, Oil Impregnated	551.....Glass Filled Polypropylene	
180.....Copper Alloy	552.....Unfilled Polypropylene	
305.....Carbon Steel, Black Epoxy Coated	555.....Polyvinyl Chloride	
306.....Carbon Steel, Black PTFE Coated	556.....Black Vinyl	
307.....Aluminum, Black Epoxy Coated	557.....Conductive Carbon-filled Polypropylene	
308.....Stainless Steel, Black PTFE Coated	558.....Conductive HDPE	
309.....Aluminum, Black PTFE Coated	570.....Rulon II®	
313.....Aluminum, White Epoxy Coated	580.....Ryton®	
330.....Zinc Plated Steel	600.....PTFE (virgin material) Tetrafluorocarbon (TFE)	
332.....Aluminum, Electroless Nickel Plated	603.....Blue Gylon®	
333.....Carbon Steel, Electroless Nickel Plated	604.....PTFE	
335.....Galvanized Steel	606.....PTFE	
337.....Silver Plated Steel	607.....Envelon	
351.....Food Grade Santoprene®	608.....Conductive PTFE	
353.....Geolast; Color: Black	610.....PTFE Encapsulated Silicon	
354.....Injection Molded #203-40 Santoprene® Duro 40D +/-5; Color: RED	611.....PTFE Encapsulated FKM	
356.....Hytrel®	632.....Neoprene/Hytrel®	
357.....Injection Molded Polyurethane	633.....FKM/PTFE	
358.....Urethane Rubber (Some Applications) (Compression Mold)	634.....EPDM/PTFE	
359.....Urethane Rubber	635.....Neoprene/PTFE	
360.....Nitrile Rubber Color coded: RED	637.....PTFE, FKM/PTFE	
363.....FKM (Fluorocarbon) Color coded: YELLOW	638.....PTFE, Hytrel®/PTFE	
364.....EPDM Rubber Color coded: BLUE	639.....Nitrile/TFE	
	643.....Santoprene®/EPDM	
	644.....Santoprene®/PTFE	
	656.....Santoprene® Diaphragm and Check Balls/EPDM Seats	
	661.....EPDM/Santoprene®	
	666.....FDA Nitrile Diaphragm,	

RECYCLING

Warren Rupp is an ISO14001 registered company and is committed to minimizing the impact our products have on the environment. Many components of SANDPIPER® AODD pumps are made of recyclable materials. We encourage pump users to recycle worn out parts and pumps whenever possible, after any hazardous pumped fluids are thoroughly flushed. Pump users that recycle will gain the satisfaction to know that their discarded part(s) or pump will not end up in a landfill. The recyclability of SANDPIPER products is a vital part of Warren Rupp's commitment to environmental stewardship.



Air Distribution Valve Assembly With Aluminum Center



Air Distribution Valve Servicing

See repair parts drawing, remove screws.

- Step 1:** Remove hex capscrews (1E).
- Step 2:** Remove end cap (1D).
- Step 3:** Remove spool part of (1A) (caution: do not scratch).
- Step 4:** Press sleeve (1A) from body (1B).
- Step 5:** Inspect bumpers (1C) and o-rings (1F).
- Step 6:** Lightly lubricate O-Rings (1F) on sleeve (1A).
- Step 7:** Press sleeve (1A) into body (1B).
- Step 8:** Reassemble in reverse order, starting with step 3.

Note: Sleeve and spool (1A) set is match ground to a specified clearance sleeve and spools (1A) cannot be interchanged.

ATEX Compliant

IMPORTANT



Read these instructions completely, before installation and start-up. It is the responsibility of the purchaser to retain this manual for reference. Failure to comply with the recommendations stated in this manual will damage the pump, and void factory warranty.

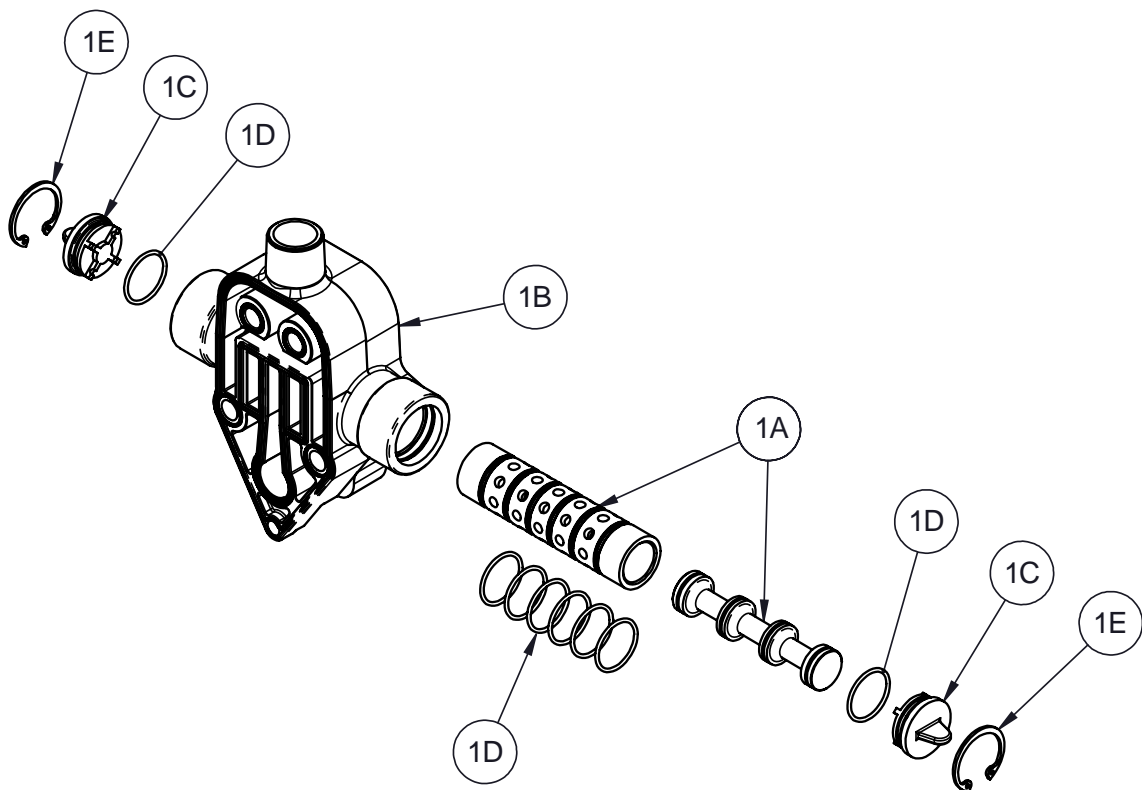
Main Air Valve Assembly Parts List

Item	Item Number	Description	Qty
1	031.203.000	Assembly, Main Air Valve	1
1A	031.039.000	Sleeve & Spool Set	1
1B	095.113.157	Body, Valve	1
1C	132.037.357	Bumper	2
1D	165.129.157	Cap, End	2
1E	170.032.330	1/4-20 X 3/4 Capscrew	8
1F	560.058.360	7/8 ID X 1/16 CS O-Ring	8

LEGEND:

○ = Items contained within Air End Kits

Air Distribution Valve Assembly With Cast Iron Center



4: AIR END

Air Distribution Valve Servicing

See repair parts drawing, remove screws.

- Step 1:** Remove end cap retainer (1E).
- Step 2:** Remove end cap (1C).
- Step 3:** Remove spool part of (1A) (caution, do not scratch).
- Step 4:** Press sleeve (1A) from body (1B).
- Step 5:** Inspect O-Ring (1D) and replace if necessary.
- Step 6:** Lightly lubricate O-Rings (1D) on spool (1A).
- Step 7:** Press sleeve (1A) into body (1B).
- Step 8:** Reassemble in reverse order.

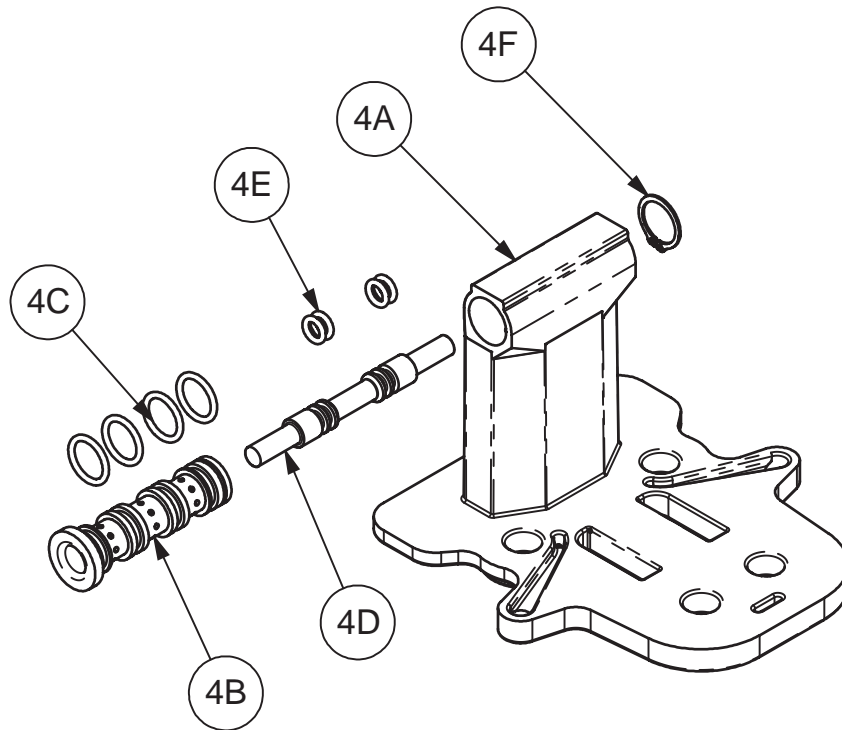
Note: Sleeve and spool (1A) set is match ground to a specified clearance sleeve and spools (1A) cannot be interchanged.

 **ATEX Compliant**

Main Air Valve Assembly Parts List

Item	Part Number	Description	Qty
1	031.030.557	Assembly, Main Air Valve	1
1A	031.039.000	Sleeve and Spool set	1
1B	095.051.557	Body, Air Valve	1
1C	165.038.558	Cap, End	2
1D	560.058.360	O-ring	8
1E	675.043.115	Ring, Retaining	2

Pilot Valve Assembly



Pilot Valve Servicing

With Pilot Valve removed from pump.

Step 1: Remove snap ring (4F).

Step 2: Remove sleeve (4B), inspect O-Rings (4C), replace if required.

Step 3: Remove spool (4D) from sleeve (4B), inspect O-Rings (4E), replace if required.

Step 4: Lightly lubricate O-Rings (4C) and (4E).

Reassemble in reverse order.

PILOT VALVE ASSEMBLY PARTS LIST

Item	Part Number	Description	Qty
④	095.074.001	Pilot Valve Assembly	1
4A	095.071.557	Pilot Valve Body	1
4B	755.025.162	Pilot Valve sleeve	1
4C	560.033.360	O-Ring	4
4D	775.014.115	Pilot Valve Spool	1
4E	560.023.360	O-Ring	4
4F	675.037.080	Retaining Ring	1

LEGEND:

○ = Items contained within Air End Kits

 **ATEX Compliant**



SANDPIPER®
A WARREN RUPP INC. BRAND

SANDPIPERPUMP.COM

sb1dlf5sm-rev1222

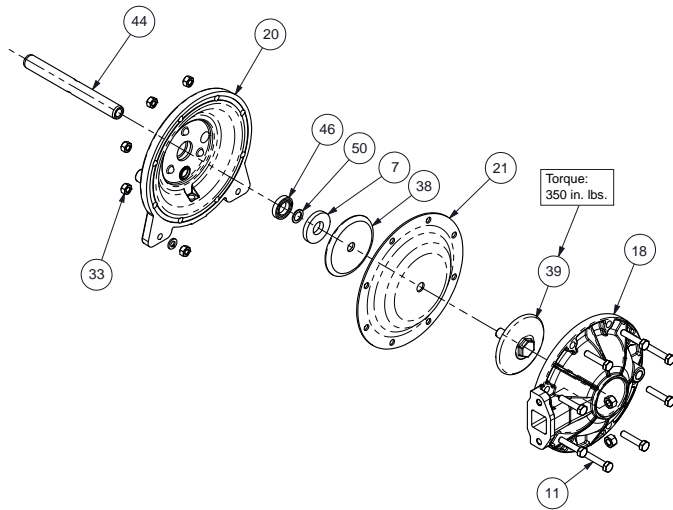
Model SB1 & SB25 • 17

Tel: 866-777-6060
Fax: 866-777-6383
Int'l: +001 267 404 2910

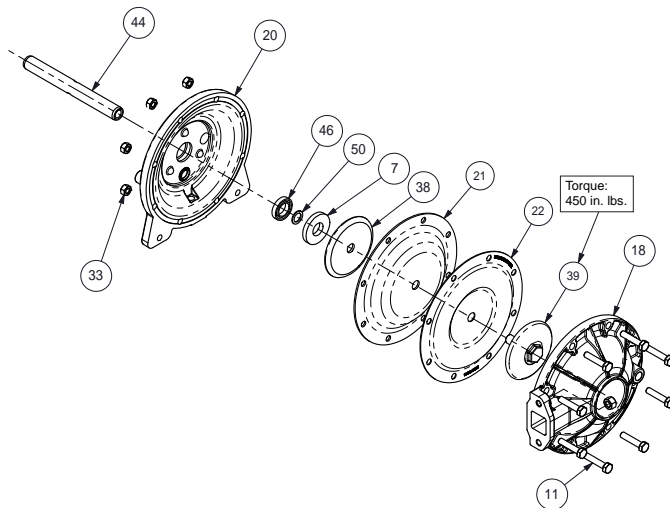
Springer Pumps, LLC
Springer Parts®

Websites: www.springerpumps.com
www.springerparts.com

Diaphragm Service Drawing

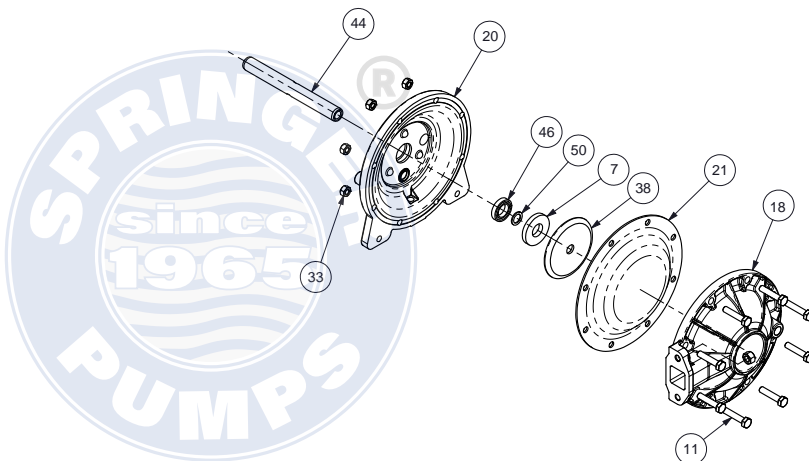


Diaphragm Service Drawing - with Overlay



5: WET END

Diaphragm Service Drawing - One Piece Bonded



Diaphragm Servicing

Step 1: With manifolds and outer chambers removed, remove diaphragm assemblies from diaphragm rod. **DO NOT** use a pipe wrench or similar tool to remove assembly from rod. Flaws in the rod surface may damage bearings and seal. Soft jaws in a vise are recommended to prevent diaphragm rod damage.

Step 1.A: NOTE: Not all inner diaphragm plates are threaded. Some models utilize a through hole in the inner diaphragm plate. If required to separate diaphragm assembly, place assembly in a vise, gripping on the exterior cast diameter of the inner plate. Turn the outer plate clockwise to separate the assembly.

Always inspect diaphragms for wear cracks or chemical attack. Inspect inner and outer plates for deformities, rust scale and wear. Inspect intermediate bearings for elongation and wear. Inspect diaphragm rod for wear or marks.
Clean or repair if appropriate. Replace as required.

Step 2: Reassembly: There are two different types of diaphragm plate assemblies utilized throughout the Sandpiper product line: Outer plate with a threaded stud, diaphragm, and a threaded inner plate.

Outer plate with a threaded stud, diaphragm, and an inner plate with through hole. Secure threaded inner plate in a vise. Ensure that the plates are being installed with the outer radius against the diaphragm.

Step 3: Lightly lubricate, with a compatible material, the inner faces of both outer and inner diaphragm plates when using on non Overlay diaphragms (For EPDM water is recommended). No lubrication is required.

Step 4: Push the threaded outer diaphragm plate through the center hole of the diaphragm.
Note: Most diaphragms are installed with the natural bulge out towards the fluid side. S05, S07, and S10 non-metallic units are installed with the natural bulge in towards the air side.

Step 5: Thread or place, outer plate stud into the inner plate. For threaded inner plates, use a torque wrench to tighten the assembly together. Torque values are called out on the exploded view.

Repeat procedure for second side assembly. Allow a minimum of 15 minutes to elapse after torquing, then re-torque the assembly to compensate for stress relaxation in the clamped assembly.

Step 6: Thread one assembly onto the diaphragm rod with sealing washer (when used) and bumper.

Step 7: Install diaphragm rod assembly into pump and secure by installing the outer chamber in place and tightening the capscrews.

Step 8: On opposite side of pump, thread the remaining assembly onto the diaphragm rod. Using a torque wrench, tighten the assembly to the diaphragm rod. Align diaphragm through bolt holes, always going forward past the recommended torque. Torque values are called out on the exploded view. **NEVER** reverse to align holes, if alignment cannot be achieved without damage to diaphragm, loosen complete assemblies, rotate diaphragm and reassemble as described above.

Step 9: Complete assembly of entire unit.
One Piece Diaphragm Servicing (Bonded PTFE with integral plate) The One Piece diaphragm has a threaded stud installed in the integral plate at the factory. The inner diaphragm plate has a through hole instead of a threaded hole. Place the inner plate over the diaphragm stud and thread the first diaphragm / inner plate onto the diaphragm rod only until the inner plate contacts the rod. Do not tighten. A small amount of grease may be applied between the inner plate and the diaphragm to facilitate assembly. Insert the diaphragm / rod assembly into the pump and install the outer chamber. Turn the pump over and thread the second diaphragm / inner plate onto the diaphragm rod. Turn the diaphragm until the inner plate contacts the rod and hand tighten the assembly. Continue tightening until the bolt holes align with the inner chamber holes. **DO NOT LEAVE THE ASSEMBLY LOOSE.**

IMPORTANT



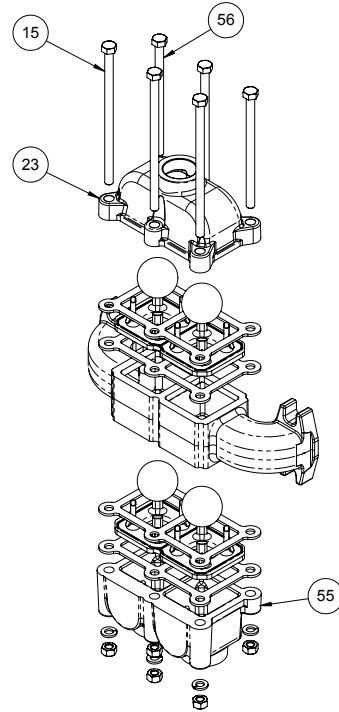
Read these instructions completely, before installation and start-up. It is the responsibility of the purchaser to retain this manual for reference. Failure to comply with the recommendations stated in this manual will damage the pump, and void factory warranty.

Dual Port Options

Illustration for Dual Port Suction and Single or Dual Port Discharge

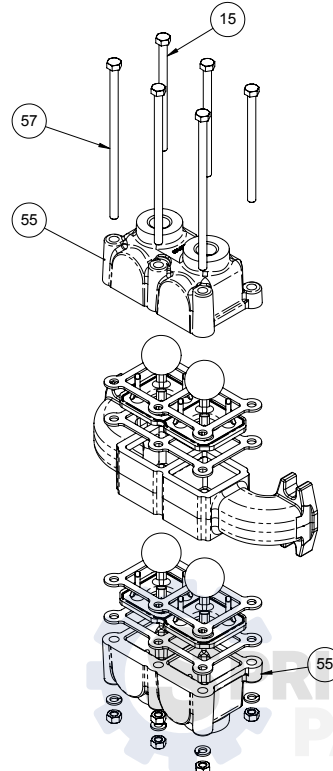
Dual Port Suction / Single Discharge Repair Parts List				
Item	Part Number	Description	Qty.	
15	170.122.330	Capscrew, Hex 5/16-18 UNC-2A X 5.00	3	
23	334.013.110	Flange, Porting 1" NPT	1	
	334.013.110 E	Flange, Porting 1" BSP Tapered	1	
	334.013.112	Flange, Porting 1" NPT	1	
	334.013.112 E	Flange, Porting 1" BSP Tapered	1	
	334.013.157	Flange, Porting 1" NPT	1	
	334.013.157 E	Flange, Porting 1" BSP Tapered	1	
55	334.036.110	Flange, Dual Porting 1" NPT	1	
	334.036.110 E	Flange, Dual Porting 1" BSP Tapered	1	
	334.036.112	Flange, Dual Porting 1" NPT	1	
	334.036.112 E	Flange, Dual Porting 1" BSP Tapered	1	
	334.036.156	Flange, Dual Porting 1" NPT	1	
	334.036.156 E	Flange, Dual Porting 1" BSP Tapered	1	
56	170.125.330	Capscrew, Hex 5/16-18 UNC-2A X 6.00	3	

DUAL PORT SUCTION
SINGLE PORT DISCHARGE



Dual Port Suction and Discharge Repair Parts List				
Item	Part Number	Description	Qty.	
15	170.122.330	Capscrew, Hex 5/16-18 UNC-2A X 5.00	3	
55	334.036.110	Flange, Dual Porting 1" NPT	2	
	334.036.110 E	Flange, Dual Porting 1" BSP Tapered	2	
	334.036.112	Flange, Dual Porting 1" NPT	2	
	334.036.112 E	Flange, Dual Porting 1" BSP Tapered	2	
	334.036.156	Flange, Dual Porting 1" NPT	2	
	334.036.156 E	Flange, Dual Porting 1" BSP Tapered	2	
57	170.084.330	Capscrew, Hex 5/16-18 UNC-2A X 7.00	3	

DUAL PORT SUCTION
AND DISCHARGE



6: OPTIONAL

5 - YEAR Limited Product Warranty

Warren Rupp, Inc. ("Warren Rupp") warrants to the original end-use purchaser that no product sold by Warren Rupp that bears a Warren Rupp brand shall fail under normal use and service due to a defect in material or workmanship within five years from the date of shipment from Warren Rupp's factory. Warren Rupp brands include Warren Rupp®, SANDPIPER®, SANDPIPER Signature Series™, MARATHON®, Porta-Pump®, SludgeMaster™ and Tranquillizer®.

The use of non-OEM replacement parts will void (or negate) agency certifications, including CE, ATEX, CSA, 3A and EC1935 compliance (Food Contact Materials). Warren Rupp, Inc. cannot ensure nor warrant non-OEM parts to meet the stringent requirements of the certifying agencies.

~ See complete warranty at <https://www.sandpiperpump.com/>



EC Declaration of Conformity

Manufacturer:
Warren Rupp, Inc.
800 N. Main Street
Mansfield, Ohio, 44902 USA

Certifies that Air-Operated Double Diaphragm Pump Models: DSB Series, DMF Series, G Series, HDB Series, HDF Series, HP Series, F Series, MS Series, S Series, SL Series, SP Series, SSB Series, T Series, U1F Series, WR Series; High Pressure Pump Models: EH Series, GH Series, SH Series; Submersible Pump Models: SMA3 Series, SPA Series; and Surge Dampener/Suppressor Models: DA Series, TA Series comply with the European Community Directive 2006/42/EC on Machinery, according to Annex VIII. This product has used Harmonized Standard EN809:2012, Pumps and Pump Units for Liquids - Common Safety Requirements, to verify conformance.

October 3, 2022

DATE/APPROVAL/TITLE:

Technical File on record with:
DEKRA Certification B.V.
Meander 1051
6825 MJ Arnhem
The Netherlands

A handwritten signature in dark ink, appearing to read "Dennis Hall".

Signature of authorized person

Dennis Hall

Printed name of authorized person

Engineering Manager

Title

The INEX logo consists of the letters "INEX" in a bold, italicized, sans-serif font, with a small graphic element to the right.

The CE mark, consisting of the letters "C" and "E" in a stylized, bold font, indicating conformity with European standards.

7: WARRANTY



EC Declaration of Conformity

Manufacturer:
Warren Rupp, Inc.
800 N. Main Street
Mansfield, Ohio, 44902 USA

Certifies that Air-Operated Double Diaphragm Pump Models: DSB Series, DMF Series, G Series, HDB Series, HDF Series, HP Series, F Series, MS Series, S Series, SL Series, SP Series, SSB Series, T Series, U1F Series, WR Series; High Pressure Pump Models: EH Series, GH Series, SH Series; Submersible Pump Models: SMA3 Series, SPA Series; and Surge Dampener/Suppressor Models: DA Series, TA Series comply with the United Kingdom Statutory Instruments 2008 No. 1597, The Supply of Machinery (Safety) Regulations 2008, according to Annex VIII. This product has used Designated Standard EN809:2012, Pumps and Pump Units for Liquids - Common Safety Requirements, to verify conformance.

October 17, 2022

DATE/APPROVAL/TITLE:

Technical File on record with:
DEKRA Certification UK Limited
Stokenchurch House
Oxford Road
Stokenchurch
HP14 3SX

Signature of authorized person

Dennis Hall

Printed name of authorized person

Engineering Manager

Title





ATEX



EU Declaration of Conformity

Manufacturer:

Warren Rupp, Inc.
A Unit of IDEX Corporation
800 North Main Street
Mansfield, OH 44902 USA

This declaration of conformity is issued under the sole responsibility of the manufacturer. Warren Rupp, Inc. declares that Air Operated Double Diaphragm Pumps (AODD) and Surge Suppressors listed below comply with the requirements of Directive **2014/34/EU** and applicable harmonized standards.

Harmonized Standards:

- EN ISO 80079-36: 2016
- EN ISO 80079-37: 2016
- EN 60079-25: 2010

1. AODD Pumps and Surge Suppressors - Technical File on record with DEKRA Certification B.V.

Meander 1051
6825 MJ Arnhem
The Netherlands

Hazardous Location Applied:



II 2 G Ex h IIC T5...225°C (T2) Gb
II 2 D Ex h IIC T100°C...T200°C Db

- Metallic pump models with external aluminum components (DMF Series, EH Series, F Series, G & GH Series, HDB Series, HDF Series, MS Series, S Series, SH Series, SL Series, SP Series, ST Series, T Series, and U1F Series)
- Conductive plastic pump models with integral muffler (PB Series, S Series, SL Series, SP Series)
- Tranquilizer® surge suppressors (TA Series)



II 2 G Ex h IIB T5...225°C (T2) Gb
II 2 D Ex h IIB T100°C...T200°C Db

- ST Series with sight tubes (VL) and HP Series because of the projected area of non-conductive external components

2. AODD Pumps - EU Type Examination Certificate No.: DEKRA 18ATEX0094X - DEKRA Certification B.V. (0344)

Meander 1051
6825 MJ Arnhem
The Netherlands

Hazardous Location Applied:



I M1 Ex h I Ma
II 1 G Ex h IIC T5...225°C (T2) Ga
II 1 D Ex h IIC T100°C...T200°C Da

- Metallic pump models with no external aluminum (S series, HDB Series, HDF Series, G Series)
- Conductive plastic pumps equipped with metal muffler (S series, PB Series)



II 2 G Ex h ia IIC T5 Gb
II 2 D Ex h ia IIC T100°C Db

- All pump model series excluding G15, G20, G30 equipped with ATEX rated pulse output option



II 2 G Ex h mb IIC T5 Gb
II 2 D Ex h mb IIC T100°C Db

- Pump model series S05, S1F, S15, S20, S30 equipped with ATEX rated integral solenoid option

- See "ATEX Details" page in user's manual for more information
- See "Safety Information" page for conditions of safe use

DATE/APPROVAL/TITLE:
03 OCT 2022


Dennis Hall
Engineering Manager

WR_DoFC_ATEX_V_Rev1022



UKEx



EU Declaration of Conformity

Manufacturer:

Warren Rupp, Inc.
A Unit of IDEX Corporation
800 North Main Street
Mansfield, OH 44902 USA

This declaration of conformity is issued under the sole responsibility of the manufacturer.

Warren Rupp, Inc declares that Air Operated Double Diaphragm Pumps (AODD) and Surge Suppressors listed below comply with the requirements of United Kingdom Statutory Instruments **2016 No. 1107** and all the applicable standards.

Designated Standards:

- EN ISO 80079-36: 2016
- EN ISO 80079-37: 2016
- EN 60079-25: 2010

1. AODD Pumps and Surge Suppressors - Technical File on record with: DEKRA Certification UK Limited
Stokenchurch House
Oxford Road
Stokenchurch
HP14 3SX

Hazardous Location Applied:



II 2 G Ex h IIC T5...225°C (T2) Gb
II 2 D Ex h IIC T100°C...T200°C Db

- Metallic pump models with external aluminum components (DMF Series, EH Series, F Series, G & GH Series, HDB Series, HDF Series, MS Series, S Series, SH Series, SL Series, SP Series, ST Series, T Series, and U1F Series)
- Conductive plastic pump models with integral muffler (PB Series, S Series, SL Series, SP Series)
- Tranquilizer® surge suppressors (TA Series)




II 2 G Ex h IIB T5...225°C (T2) Gb
II 2 D Ex h IIB T100°C...T200°C Db

- ST Series with sight tubes (VL) and HP Series because of the projected area of non-conductive external components

7: WARRANTY

- See "ATEX Details" page in user's manual for more information
- See "Safety Information" page for conditions of safe use

DATE/APPROVAL/TITLE:
17 OCT 2022


Dennis Hall
Engineering Manager

WR_DofC_UKEx_V_Rev102